



WEEKLY NOTES

Second Sunday before Lent

27th February 2011

You are warmly invited to coffee in the church hall (just across the road) after the 9.30 service.

We welcome as officiant and preacher at 9.30 and 11am today the Revd Lynn Hellmuth, priest-in-charge of St John's Stoneleigh. St Mary's is grouped in a 'cluster' together with St John's Stoneleigh and St Mary's Cuddington, and we are beginning to explore what we can do together. As part of this process the three Vicars are spending a Sunday morning at one another's parishes to get to know the respective congregations.

Sunday Prayer Cycle

We pray today for the church and for the world, and especially in the Anglican Communion, for the province of Hong Kong; in our diocese, for the parishes in the Farnham area; in our parish, for the Principal, Staff, and Students of NESOCOT; and for all who live in Park Avenue East.

Collect and Post-communion Prayer (at 8am and 9.30am)

Almighty Father,
whose Son was revealed in majesty
before he suffered death upon the cross:
give us grace to perceive his glory,
that we may be strengthened to suffer with him
and be changed into his likeness,
from glory to glory;
who is alive and reigns with you,
in the unity of the Holy Spirit,
one God, now and for ever.
Amen.

Holy God, we see your glory in the face of Jesus Christ: may we who are partakers at his table reflect his life in word and deed, that all the world may know his power to change and save. This we ask through Jesus Christ our Lord. **Amen.**

REGULAR SERVICES THIS WEEK

IN CHURCH

(all welcome at these services)

Tuesday – **St David's Day**

**Morning
Prayer**

-

**Holy
Eucharist**

10am (parish room)

**Evening
Prayer**

-

The Vicar is on his annual retreat for part of the week, so the only weekday service is Tuesday 10am.

NEXT SUNDAY

6th March – Sunday next before Lent

8am Holy Communion

9.30am Sung Eucharist *with an all-age talk*

11am Mattins and Holy Baptism

5.30pm Evening Prayer (said)

Sharing the love of Christ, the Light of the World, with the people of Ewell

SUNDAY SERVICES

8.00am HOLY COMMUNION (*Common Worship*)

The service begins on page **167** of the black book.

Eucharistic Prayer **C**: page **191**.

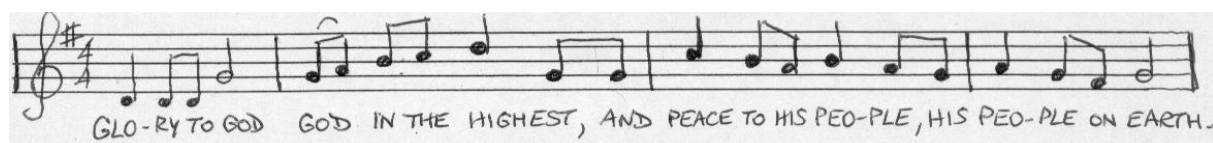
We continue with the Lord's Prayer on page **178**.

9.30am SUNG EUCHARIST (*Common Worship*)

Mass Setting: *Stanford* in Bb

INTROIT HYMN: NEW ENGLISH HYMNAL 466

Gloria: *Dancer* in G – please join in with the refrain



First Reading: Romans 8.18-25

GRADUAL HYMN: NEH 349

The Holy Gospel: St Matthew 6.25-34

Sermon: The Revd Lynn Hellmuth.

Creed, Notices, Intercessions, Peace.

OFFERTORY HYMN: NEH 263 (OMIT *)

Eucharistic Prayer: **C**

The Lord's Prayer is said.

Anthem: Ave Maria - *Rachmaninov*

Hail Mary, full of grace, the Lord is with thee; blessed art thou among women, and blessed is the fruit of thy womb, Jesus. Holy Mary, Mother of God, pray for us sinners, now and at the hour of our death.

RECESSIONAL HYMN: NEH 397

Organ: Prelude and Toccata in D minor Op57 - *Stanford* [JSH]

11.00am CHORAL MATTINS (*Book of Common Prayer*)

Millington responses: see page **8** in the *Shorter Prayer Book*.

Venite

OFFICE HYMN: NEW ENGLISH HYMNAL NEH 265

Psalm 148 (page 311)

First Lesson: Romans 8.18-25

Jubilate: *Britten* in C (page 254)

Second Lesson: St Matthew 6.25-34

HYMN: NEH 240

The service continues on page 12 with the Creed and following. The “Collect of the Day” for Sexagesima is on page 60.

Anthem: The heavens are telling - *Haydn*

The Heavens are telling the glory of God, The wonder of his work displays the firmament.

Today that is coming speaks it the day, The night that is gone to following night.

The Heavens are telling the glory of God, The wonder of his work displays the firmament.

In all the lands resounds the word, Never unperceived, ever understood.

The Heavens are telling the glory of God, The wonder of his work displays the firmament.

Sermon: The Revd Lynn Hellmuth

Prayers: led by Lynn Hellmuth

HYMN: NEH 476 (during which a collection is taken)

Blessing

Organ: Prelude and Toccata in D minor Op57 - *Stanford* [JSH]

No evening service today.

NOTICES

St Mary's 150th Anniversary Guide Book. Would you like to know more about the interior of St Mary's? You may not be aware that a special illustrated guide to the church was published in 1998 as part of the 150th anniversary celebrations. Copies are still available at the original price of £2.50. They can be bought from the parish office or the shop in Bourne Hall. Further information can be obtained from Eve Myatt-Price, the author, on most Sundays at coffee after the 9.30 service.

Thank you all who contributed to the relaunch of the parish link with Corriverton, Guyana. The sum raised amounting to £654 (E&OE) has surpassed all expectations. Our thanks go to Jay Price who masterminded the event and to Mary Newing and the parish staff and residents who made the lunch such an enjoyable occasion.

The Electoral Roll will be revised between Friday 25th February and Tuesday 15th March. Forms of application for enrolment are at the back of the church, together with a copy of the current Electoral Roll, or from the Parish Office. Those whose names are entered on the Roll are entitled to attend the Annual Parochial Church Meeting and to take part in its proceedings, so please check that you are included. If your name is already on the electoral roll, you do **not** need to fill in a new form this year.

Thanks to all involved in Thursday's fun day– St Mary's became a circus for a day! 52 children attended, and all seemed thoroughly to enjoy it.

Sharing the love of Christ, the Light of the World, with the people of Ewell

There are spare **posters advertising the Lent course** at the back of church. Please consider taking one or more and put them on display in your window, asking to put one up in a local shop:– the course, on world faiths and Christianity, is likely to be of wide interest so it would be good to spread the word!

At the **Spring Market**, we usually sell lots of plants to help raise a float for the Village Fair. If you are busy **planting your seeds** in the next few weeks, please could you put a few extra in for us so that we can put them on Evelyn's plant stall. Evelyn has requested bedding plants, perennials and herbs in particular - the more the merrier, but if possible established plants rather than cuttings. Many thanks. The Spring Market will be on 21st May.



THIS WEEK

Tuesday: Café NESCOLT, 12-2pm, very good lunches at very good prices in the church hall.

Wednesday: Coffee morning in the church hall, 10.30-12, all welcome

Wednesday evening: The next meeting about the 2011 **Ewell Village Fair** will be held at 8pm in the parish room. All welcome.

Friday: Our local **Women's World Day of Prayer Service** will be held at the United Reformed Church, London Road, Ewell, at 2.0 p.m. The speaker will be Rev. Stan Brown (Chaplain Kingston University). This year the service has been prepared by the women of Chile.

Saturday: The parish church choir perform **Karl Jenkins THE ARMED MAN: A MASS FOR PEACE**. 7.30pm- tickets available today!

FUTURE DATES

Wednesday 9th March: Ash Wednesday. Said Eucharist noon, sung Eucharist 7pm.

Tuesdays from 15th March: Lent Course begins. 'Seeking Common Ground– Some Major World Faiths.' Tuesday Evenings 7.30 pm – 8.30 pm, coffee from 7pm, in St Mary's Church Hall. Led by the Revd Dr Patrick Miller. All welcome— you don't have to be a regular at St Mary's!

Wednesdays from 16th March: Lunches during Lent. This year lunches during Lent are being held in aid of Age Concern, Epsom and Ewell, to help fund local support for older people. They will be held in the church hall on Wednesdays 16th, 23rd (with guest speaker), 30th March and 6th April from 12.15 to 1.45pm at a cost of £3.50 per person. Donations gratefully received for the raffle and bring and buy.

Sunday 27th March: Healing Services During the 8am and 9.30am Eucharists there will be the opportunity to come forward for anointing and/or prayers for healing.

Sharing the love of Christ, the Light of the World, with the people of Ewell